

*Restoring wild pollinator
and native plant habitat
through community
collaboration.*

**By working together to solve the
pollinator crisis, we can preserve
biodiversity and ensure a
sustainable future, one garden,
one landscape at a time.**



Who We Are



- **Weston Plant Pollinator Alliance (WPPA)**
Sustaining wild pollinator and native plant biodiversity through community collaboration
- **Newly Formed Citizen Group Inspired By:**
*Troubling declines of wild pollinator species and native biodiversity;
Local, regional, and global native pollinator conservation movements*
- **Members:**
Naturalists, scientists, conservationists, gardeners, beekeepers, business owners
- **Working Group Within Sustainable Weston Action Group (SWAG)**
www.sustainablewestonma.org

Our Mission



- **Conservation**

Restore and protect habitat for wild pollinator and native plant communities (focusing on at-risk species) throughout Town, in both residential and public spheres.

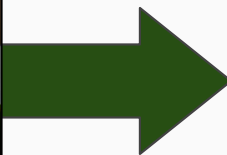
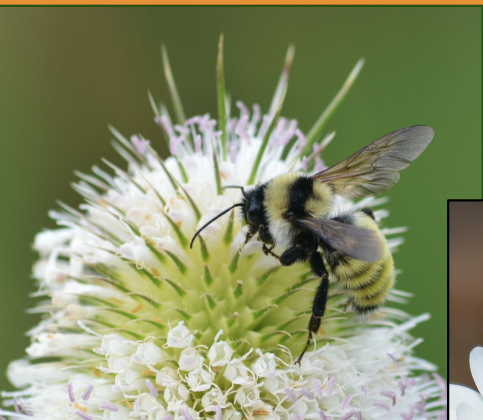
- **Education**

*Educate and empower community members towards land stewardship practices that build and sustain **native pollination systems** crucial to ecosystem health and human well-being.*

- **Community Engagement**

Collaborate with residents, landowners, schools, Town departments, and other neighboring conservation groups to implement practices and programs that promote wild pollinator health, native biodiversity, and sustainable ecosystems.

Wild Pollinator Conservation: Preserving Species Biodiversity and Ecosystem Health



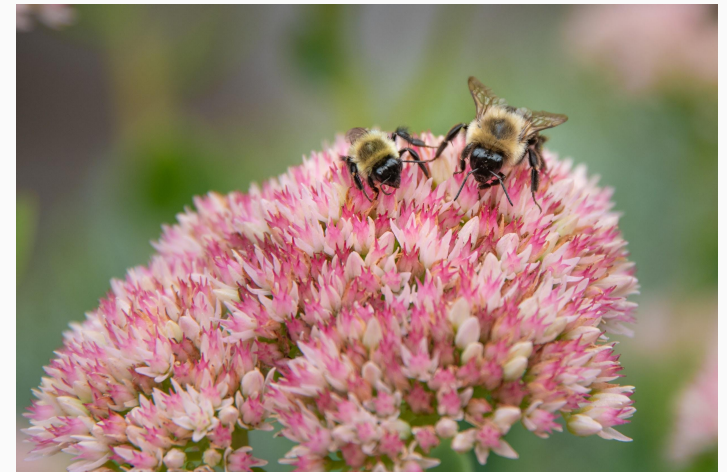
Keystone Species: *a species on which other species in an ecosystem largely depend, such that if it were removed, the ecosystem would change drastically, or collapse.*



The American Bumblebee

Critical for the functioning of ecosystems where they live.

Vitally important pollinators of wild plants and agricultural crops worldwide.



Greatest Threats to Pollinators



**HABITAT
LOSS**

PESTICIDES

**DISEASE/
PARASITES**

**CLIMATE
CHANGE**



**INVASIVE/
EXOTIC
SPECIES**

At-Risk Wild Bees in MA



Bombus fervidus
(Golden Northern Bumble Bee)



Bombus vagans
(Half-Black Bumble Bee)



Bee-Plant Interactions Key to At-Risk Pollinator Preservation



B. fervidus



B. vagans



Pollinator Preservation Demonstration Gardens in Weston



Goal:

To create demonstration low water, native, high ecological value landscapes on visible public land to help at-risk pollinator species, acting as templates to encourage homeowners to do the same

- Parcels chosen (one along Rail Trail in Weston)
- Garden design underway with emphasis on at-risk species
- Planting to occur late Spring 2021

Pollinator Preservation Demonstration Gardens in Weston



- Encourage Private Pollinator Preservation Gardens
- Provide Educational Opportunities for Positive Impacts on
 - Water usage and quality
 - Biodiversity
 - Climate Resiliency

Opportunity to work with neighboring towns to develop interconnected pollinator pathway

Pollinator-Friendly Action Guide



- 1. Plant a diversity of native plants, shrubs and trees, grown locally and specific to your region** that provide abundant pollen and nectar for a variety of pollinator species from early spring through late fall.
- 2. Plant for a succession of bloom throughout the growing season** with diverse and abundant native flowering plants.
- 3. Choose locally grown native "straight species"** plants over cultivars or "nativars" **whenever possible.**
- 4. Encourage nesting** by building small brush piles, leaving safely decaying trees, and composting leaves on your property. Leave plants stalks and seed heads for overwintering birds and insects.
- 5. Eliminate the use of pesticides and chemical fertilizers that contribute to pollinator death and decline.**
- 6. Avoid cultivars and non-native plants**
- 7. Reduce the frequency of lawn mowing and leaf-blowing.**
- 8. Shrink the size of your lawn.**

Resources for Learning More About the WPPA and Pollinator Preservation Gardens



- Contact WPPA for more information and/or to receive The Quarterly Buzz, WPPA's newsletter about native pollinator and plant conservation (email westonplantpollinatoralliance@gmail.com)
- Reach out to us directly (Elizabeth Soares elizabeth.p.soares@gmail.com; Sarah Maas Scheuplein sarah.maasscheuplein@gmail.com)
- Read more about the WPPA and the “Make Way For Pollinators” Campaign on [SWAG website](#)
- Other Resources:
 - [Native Pollinator Task Force](#) (part of Sudbury Valley Trustees)
 - [Dr. Gegear's Plant List](#) for at-risk pollinator preservation
 - [Grow Native MA](#) many resources for native plants and pollinator conservation

THANK YOU!